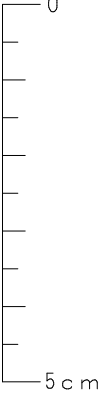
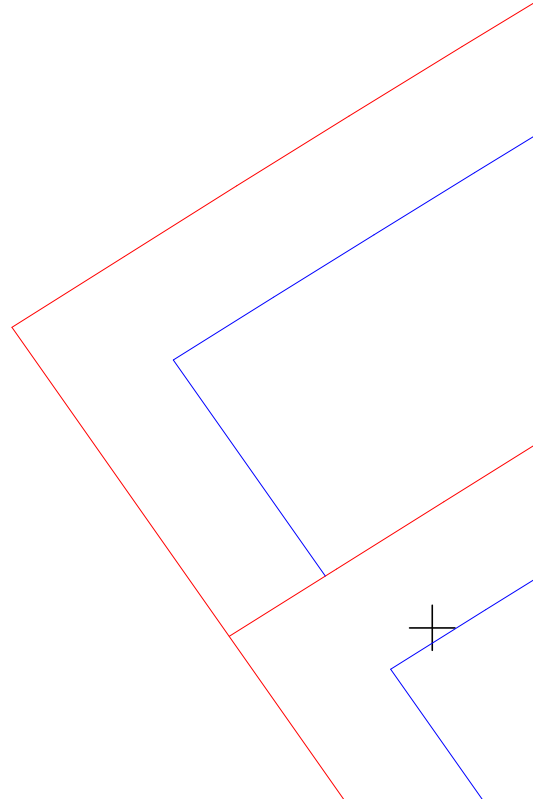
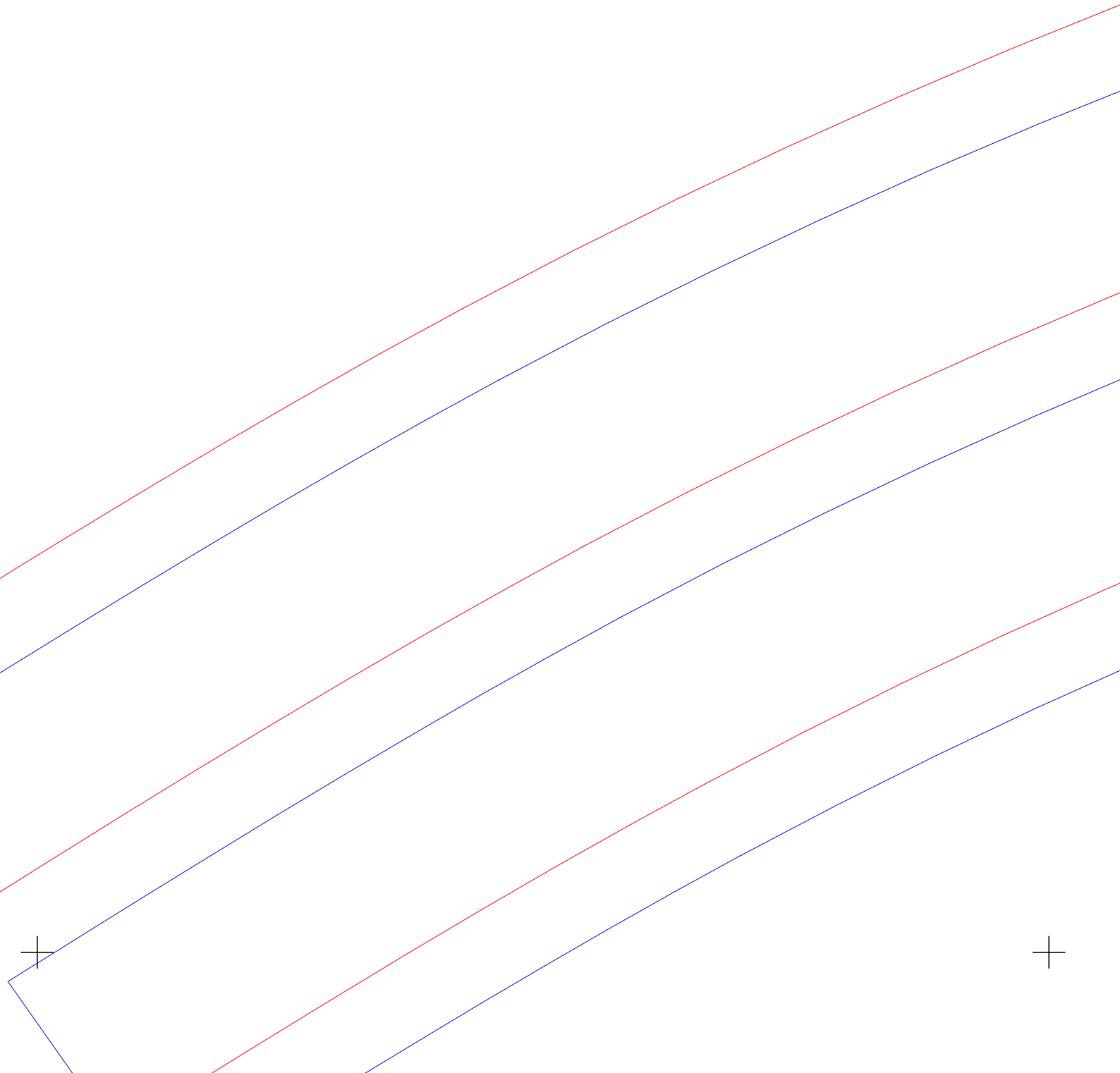
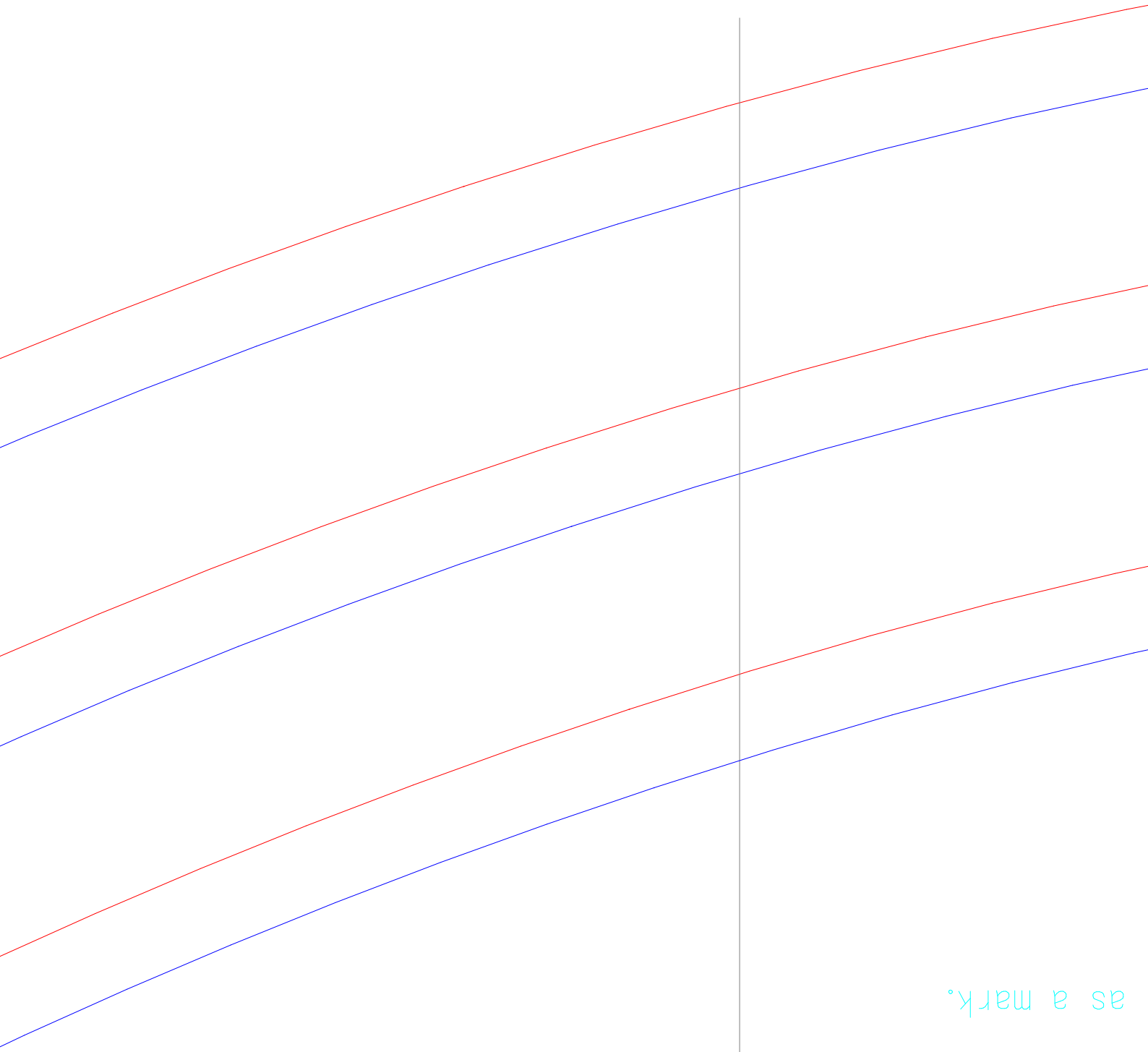


1	2	3	4
5	6	7	8
9	10	11	12
13	14	15	16
17	18	19	20

これが5cm以下の場合縮小されています
 実際のサイズで印刷しなおしてください
 方法が分からない場合はご連絡下さい

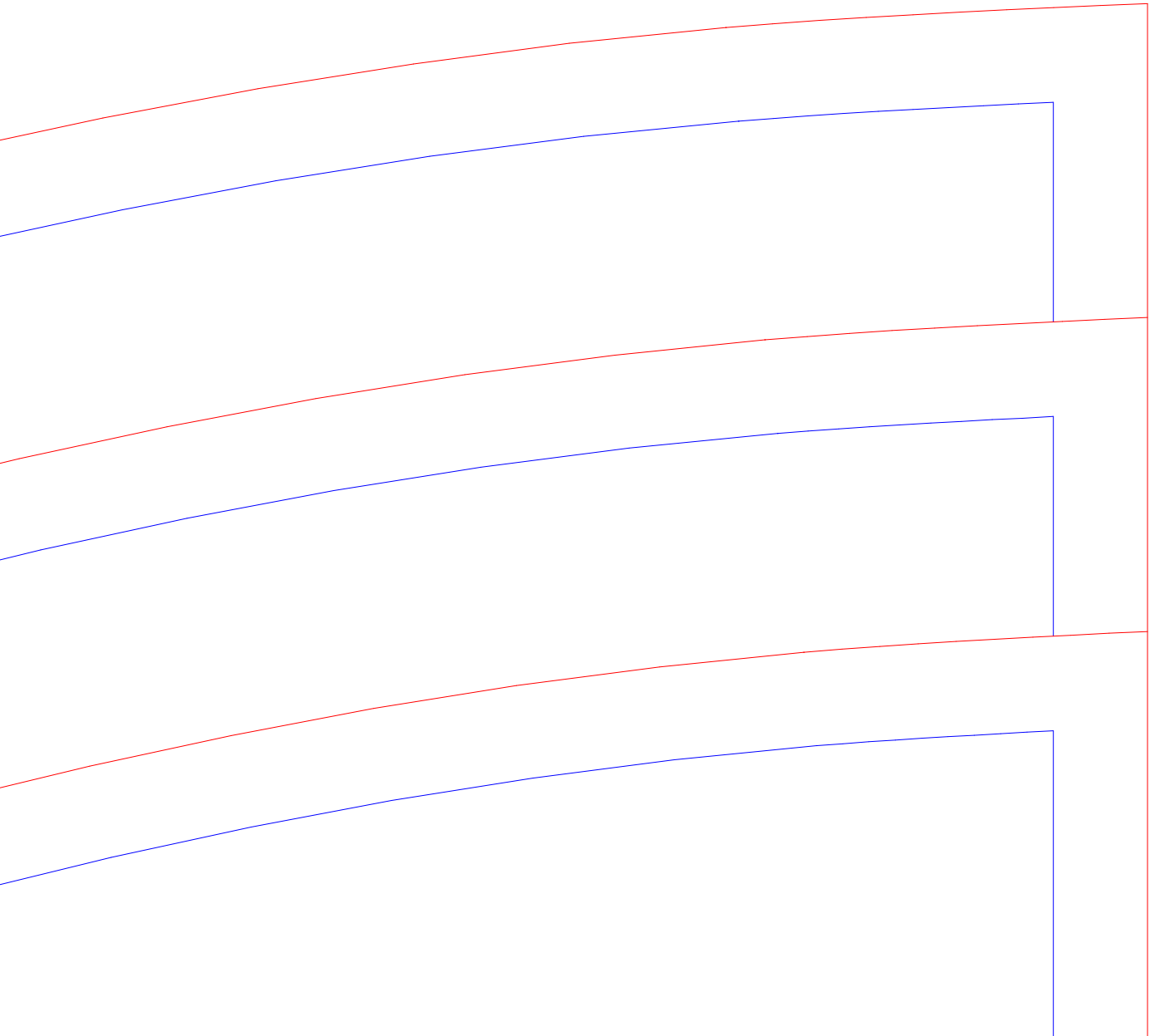




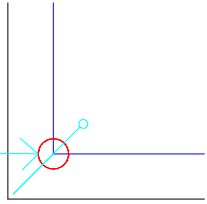
as a mark.

17.6





drawing a point the material as a



Where the corner,

そこから印をつけると角が合わせやすい

出来上がり線の角に穴をあけて

合印 (縫い合わせの位置あわせ)

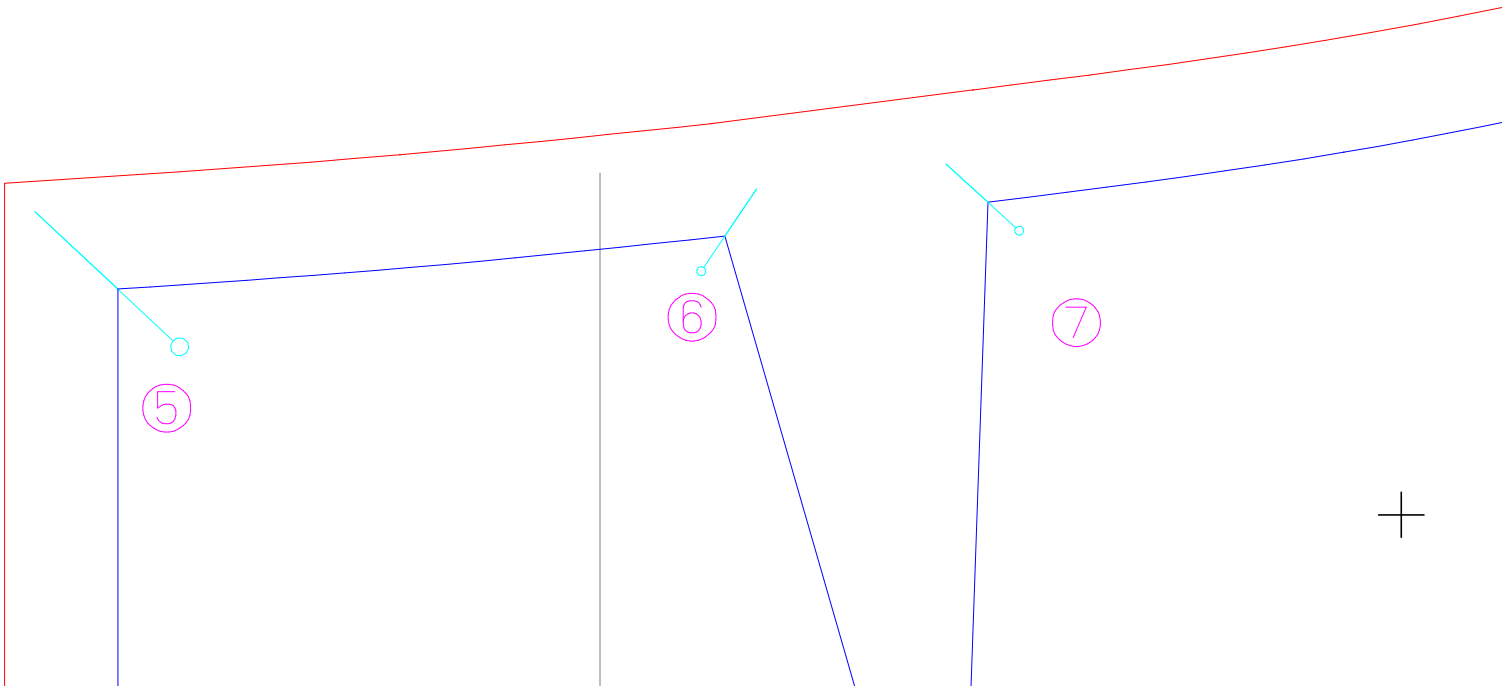
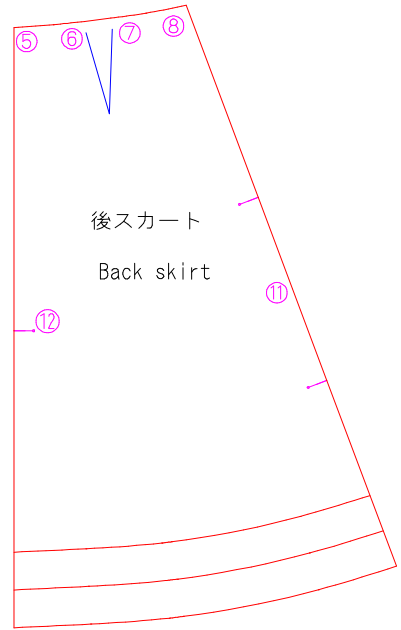
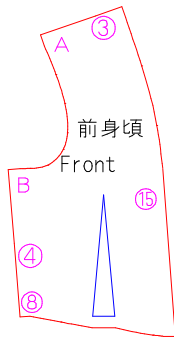
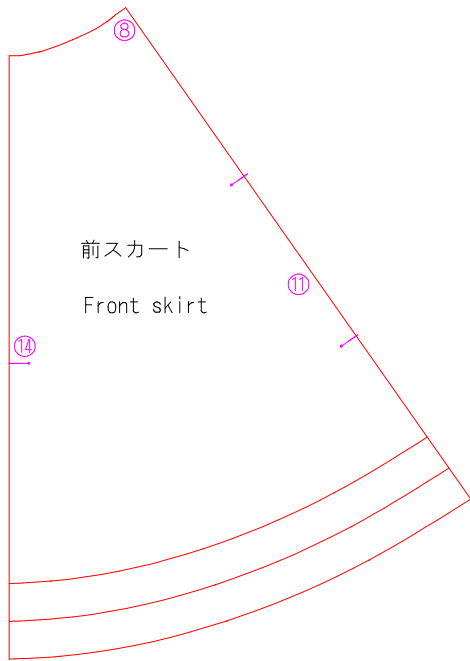
Snip the material as a mark.

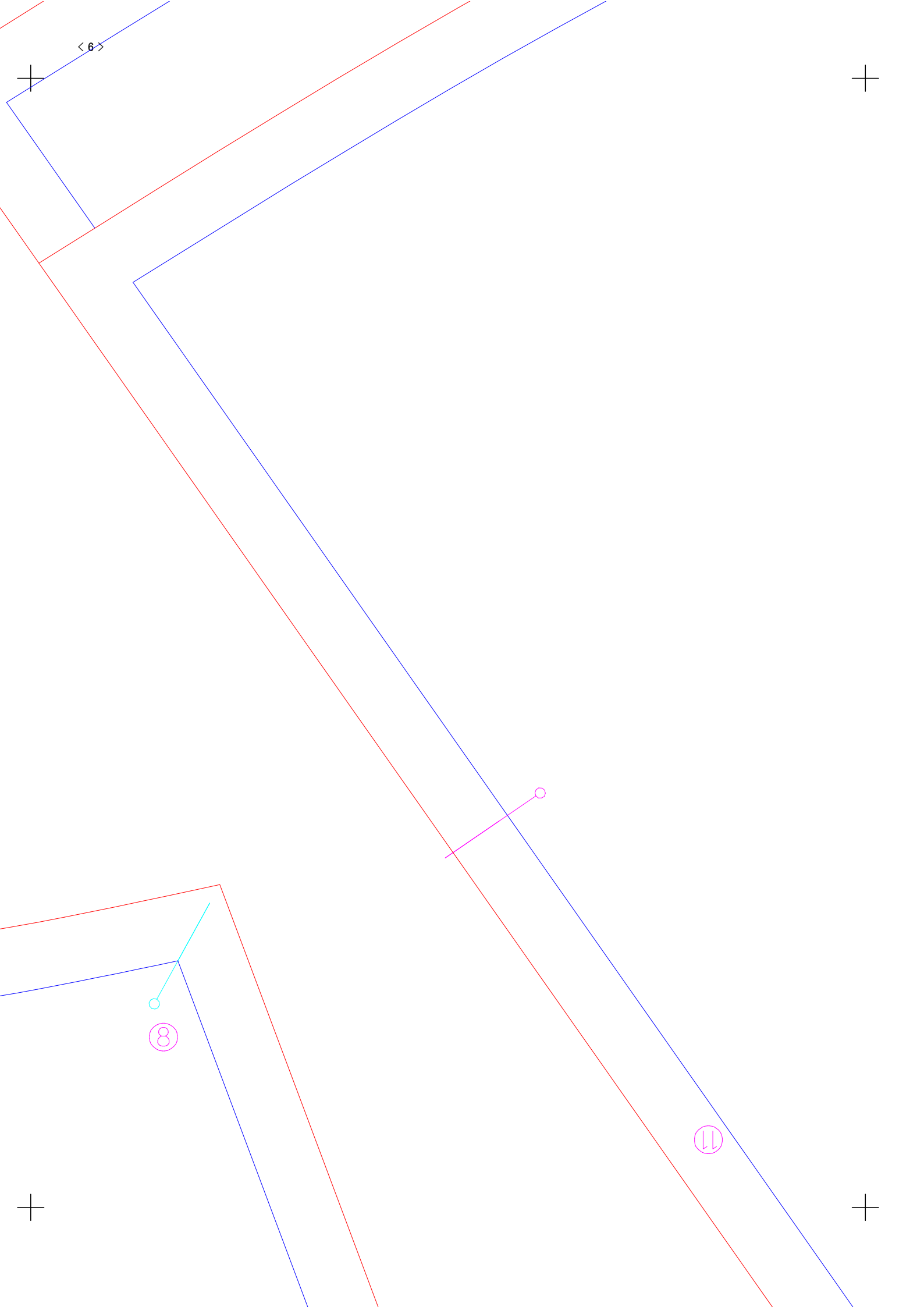
入れておくと縫い合わせがしやすいよ

縫い代に5~7mmほど切り込みを

合印 (縫い合わせの位置の印)







<7>



婦人 M

左右対称に2枚

Long coat (Tailored collar)

Front skirt

M size

× 2 (bilateral symmetry)

縫い代。切り取り線

Seam margin

出来上がり、縫い合わせ線

Finishing line



接着芯を貼る範囲

Area that apply interfacing.

地の目 (生地縦の向き)

Direction of material.

Layer this line will parallel

with height of material.

ギャザーをよせる場所

Position where gather.

合印 (縫い合わせの位置の印)

縫い代に5~7mmほど切り込みを
入れておくと縫い合わせがしやすいです

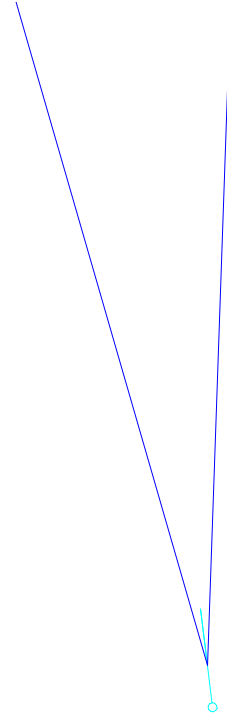
Ship the material as a mark.

⑤

< 9 >

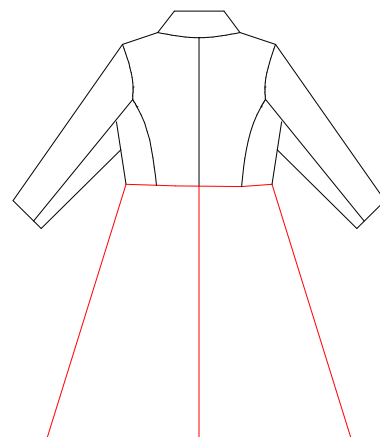
Center back

後中心



テーラードカラーの
婦人 M
後スカート
× 2

Long coat (Tailored collar)
M size
Back skirt
x 2



+

<10>

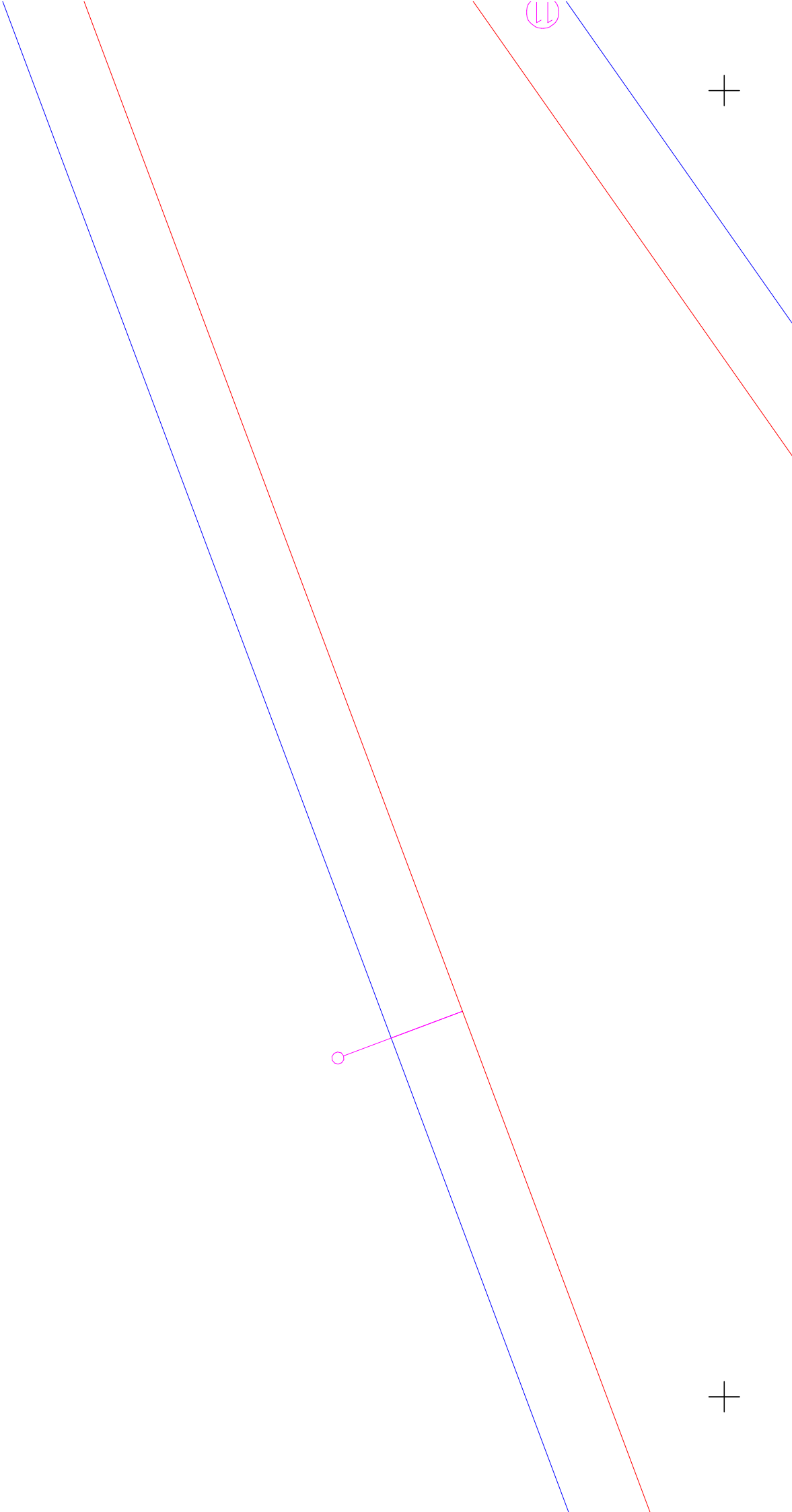
+

ラーのコート

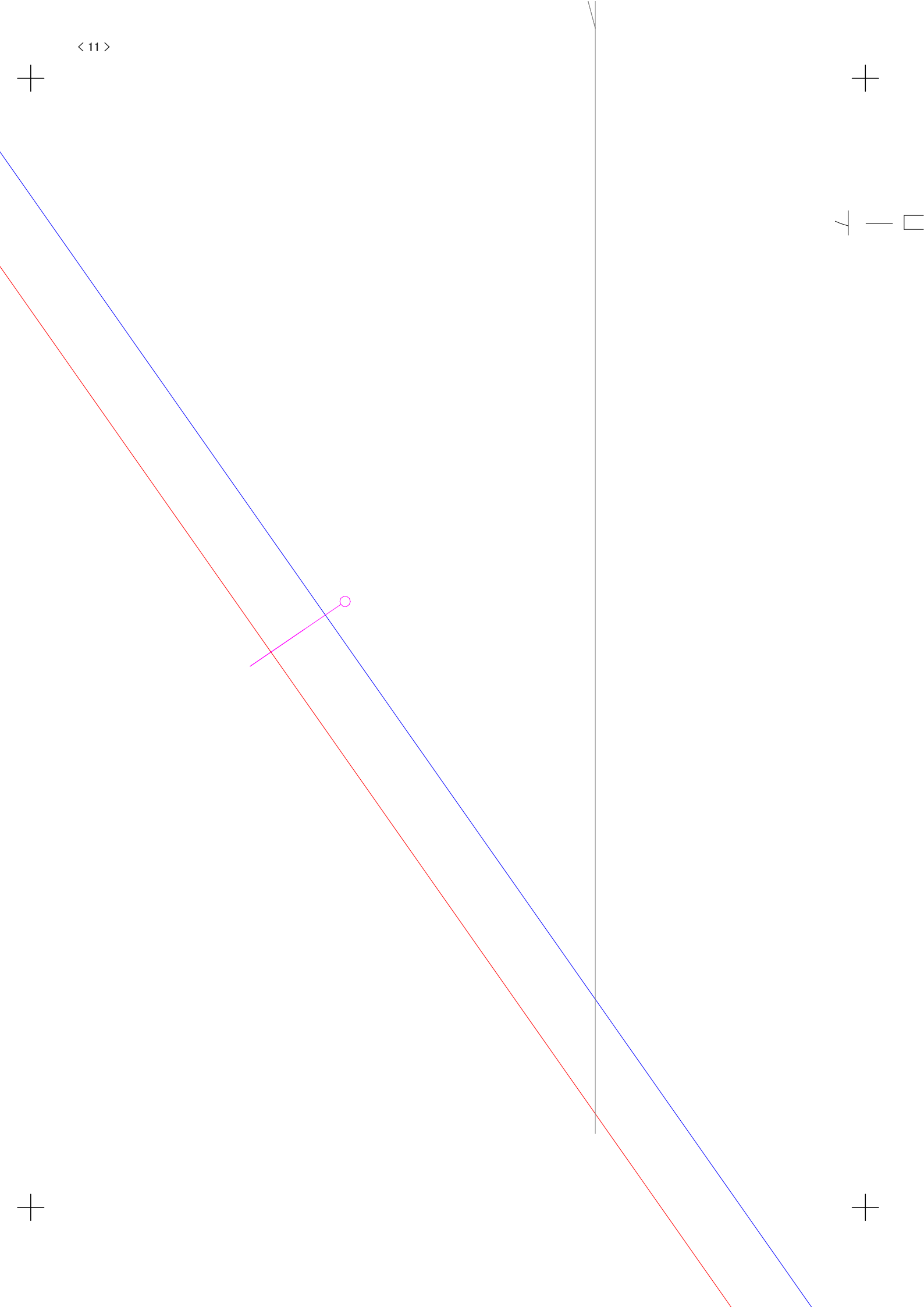
collar)

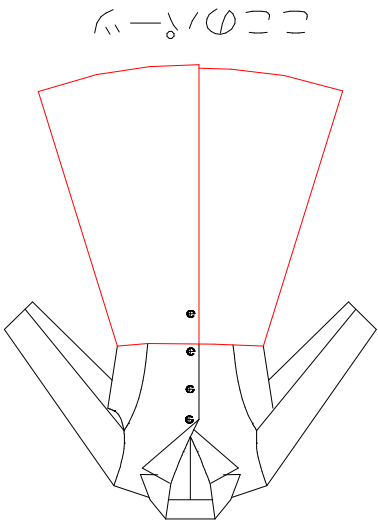
+

+



$\langle 11 \rangle$





この図は、

前スカート

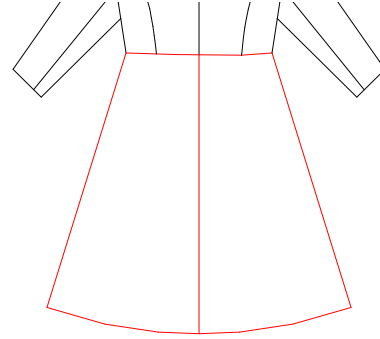
婦人 M

左右対称に2枚

Long coat (Tailored collar)

Front skirt





ここのパーツ

⑫

Finishing

Seam mar

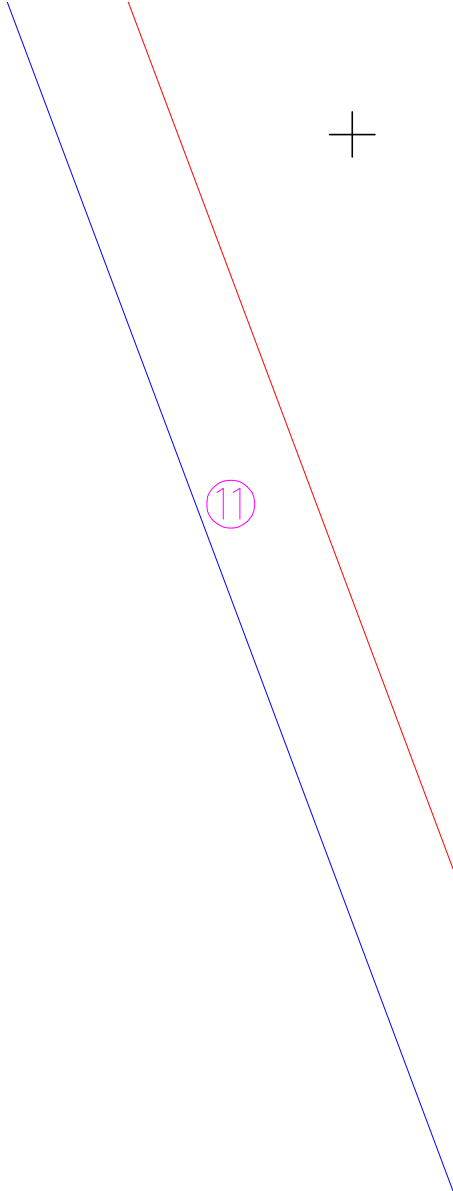
Area tha

Position

Direction

Layer, th
with heig

○ Snip the




finishing line

am margin

ea that apply interfacing.

position where gather.



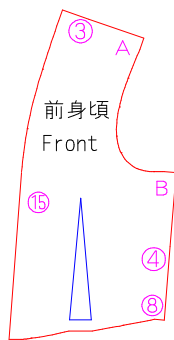
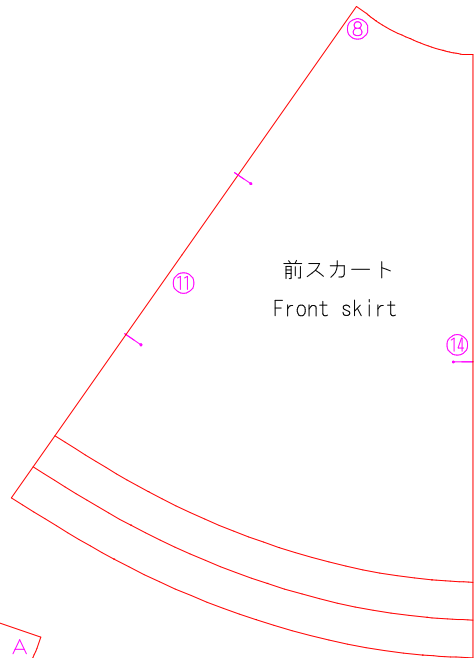
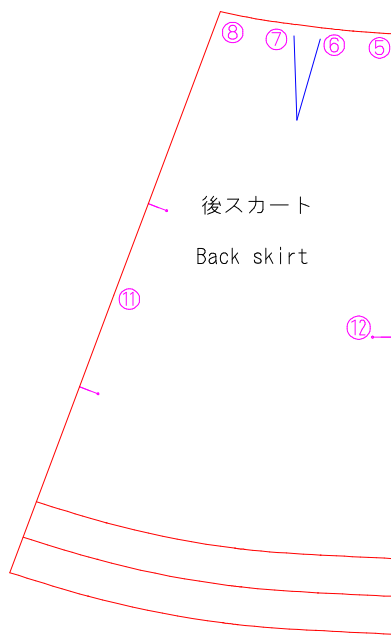
 rection of material.

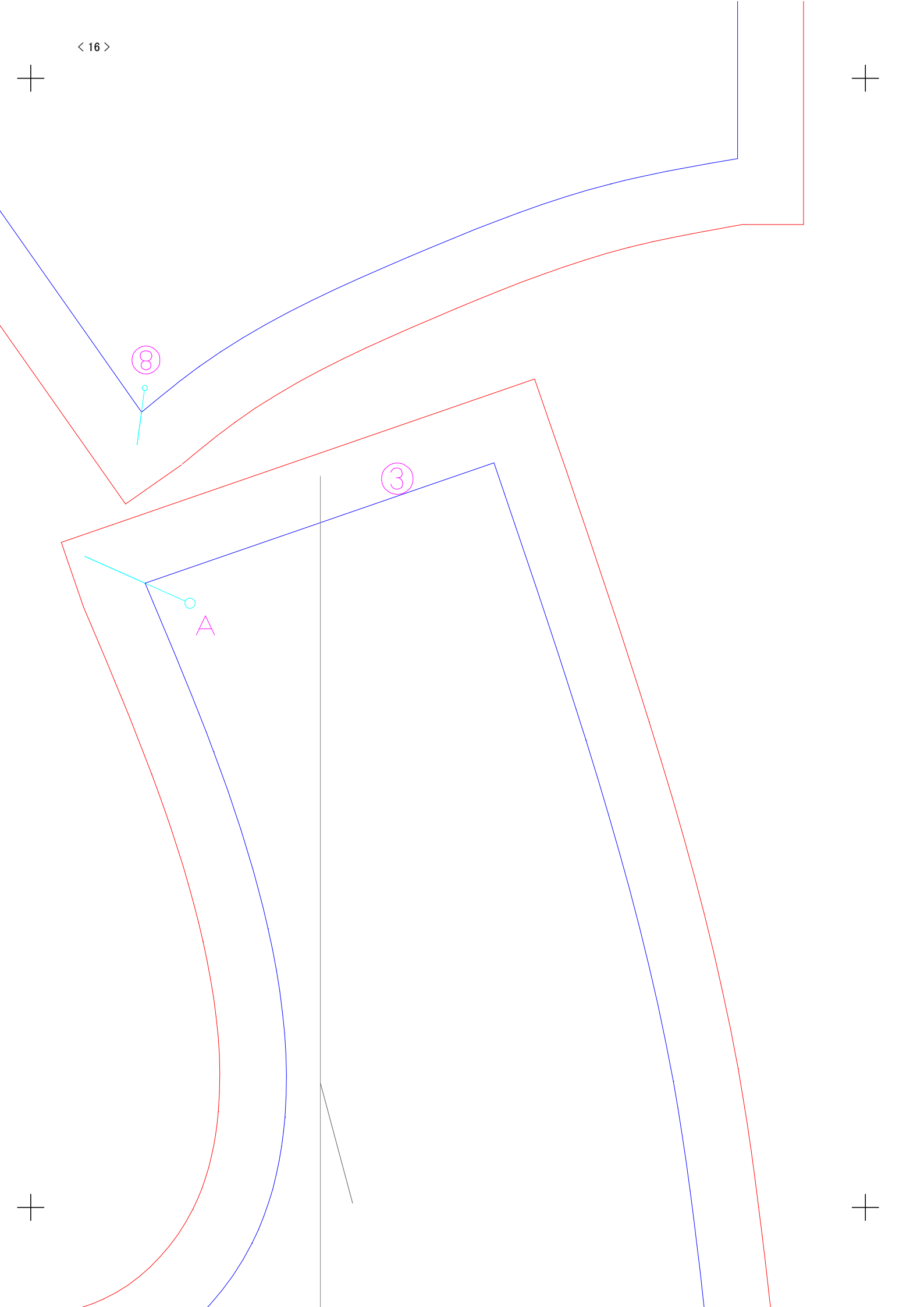
 ver this line will parallel

 ch height of material.

up the material as a mark.







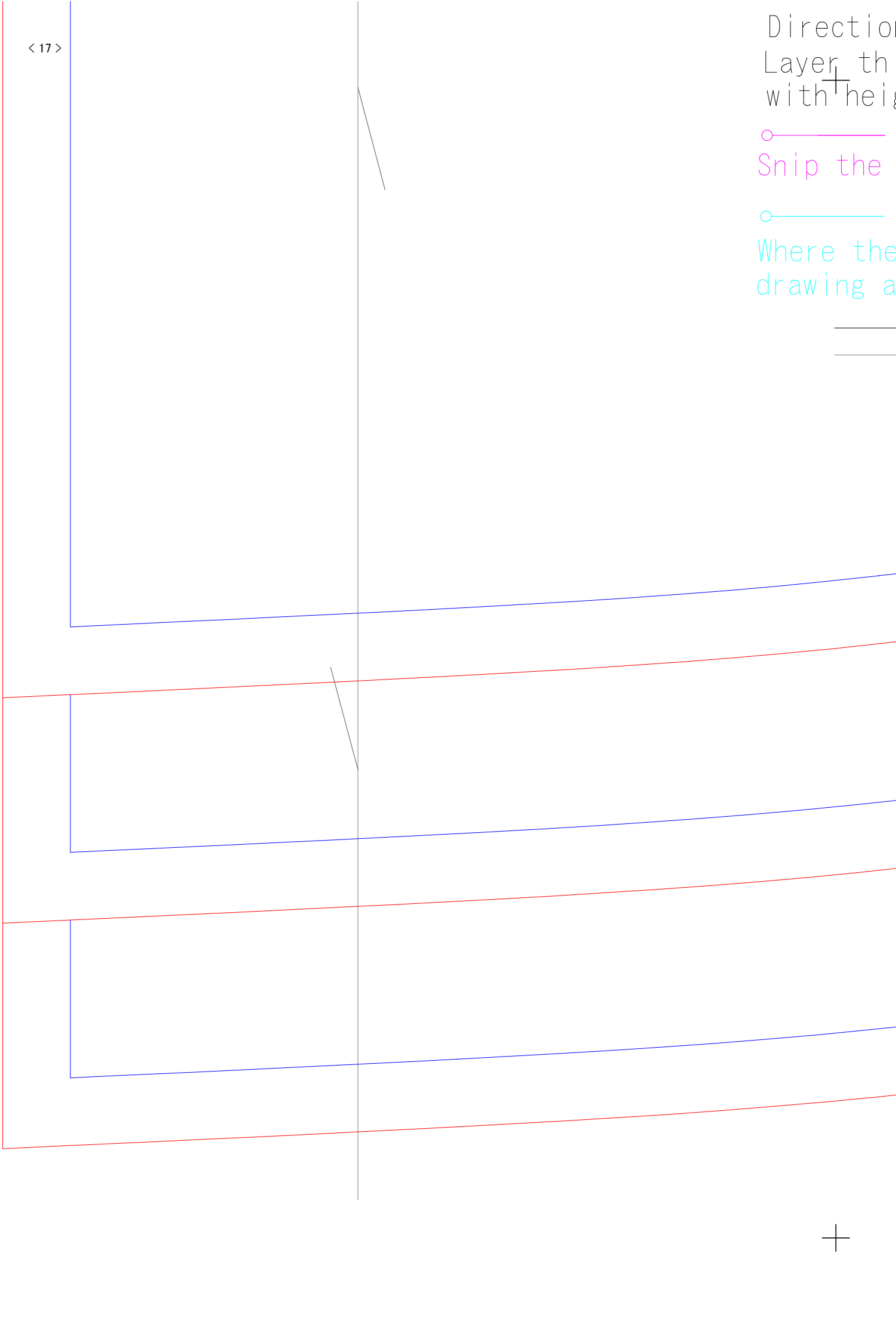
Direction
Layer, th
with heig

○ — Snip the

○ — Where the
drawing a

—
—

<17>

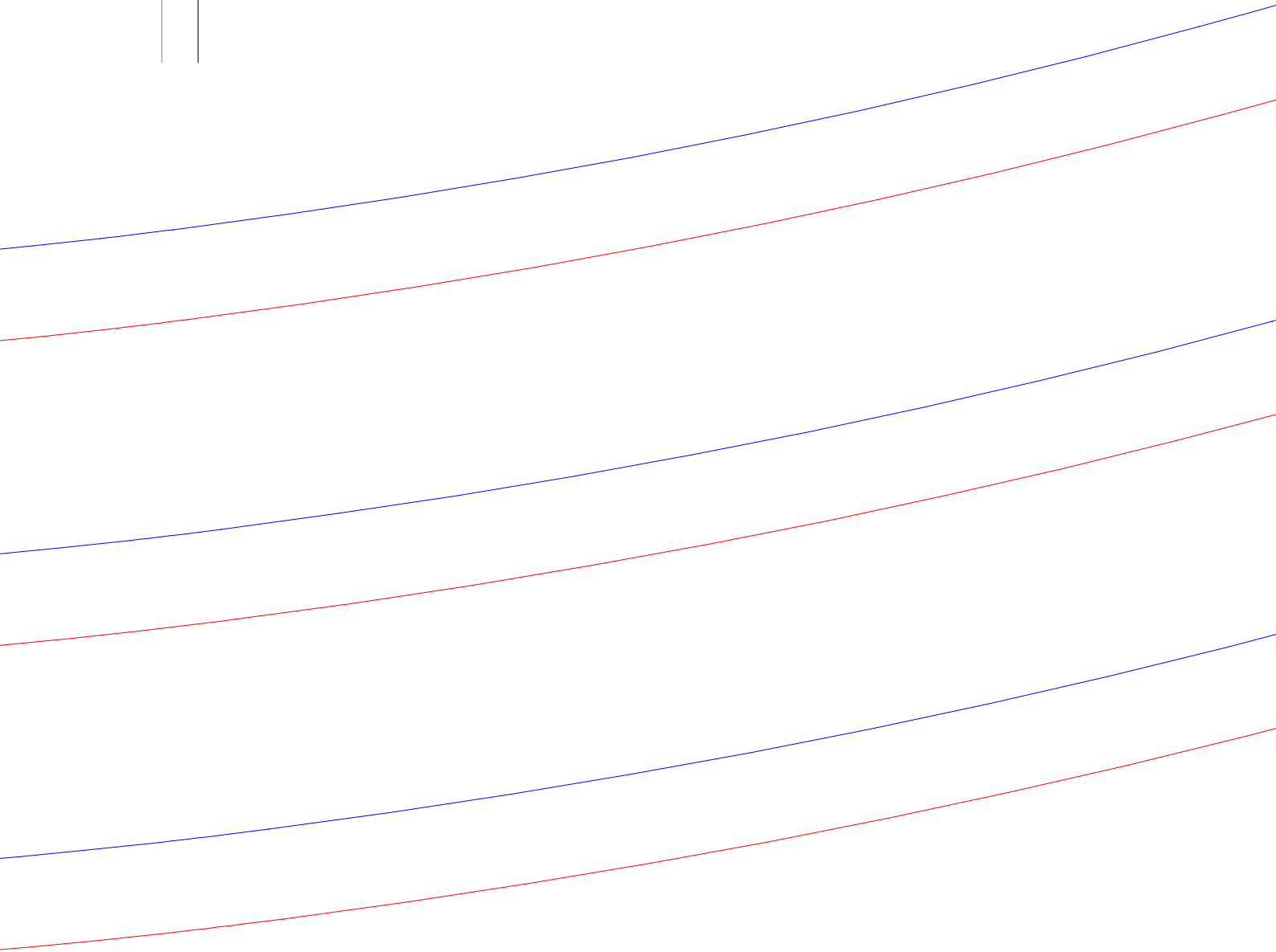
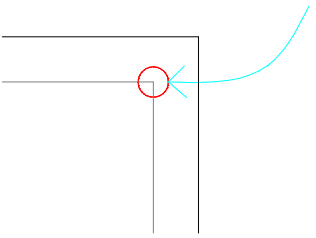


direction of material.
over this line will parallel
height of material.

+

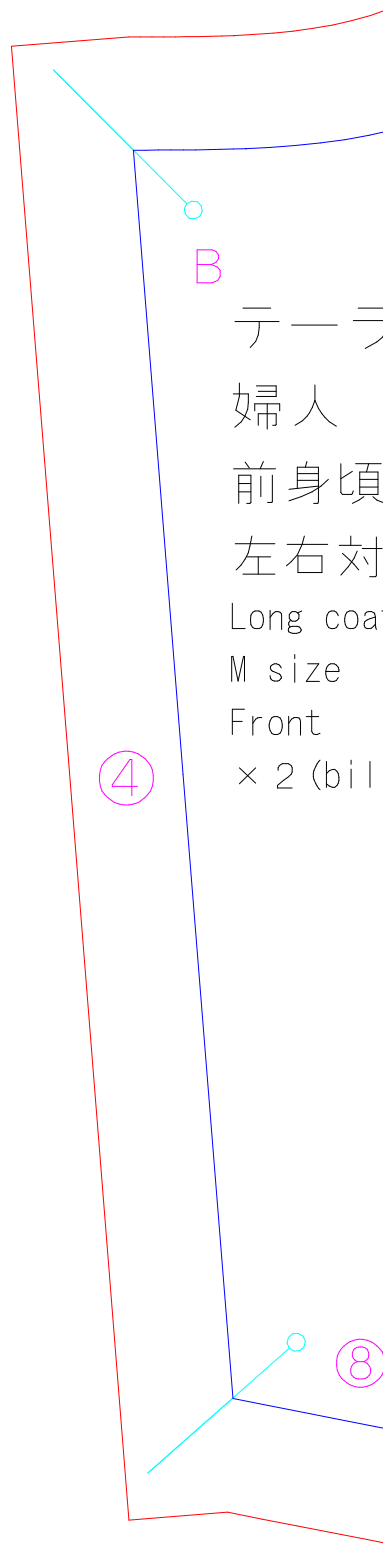
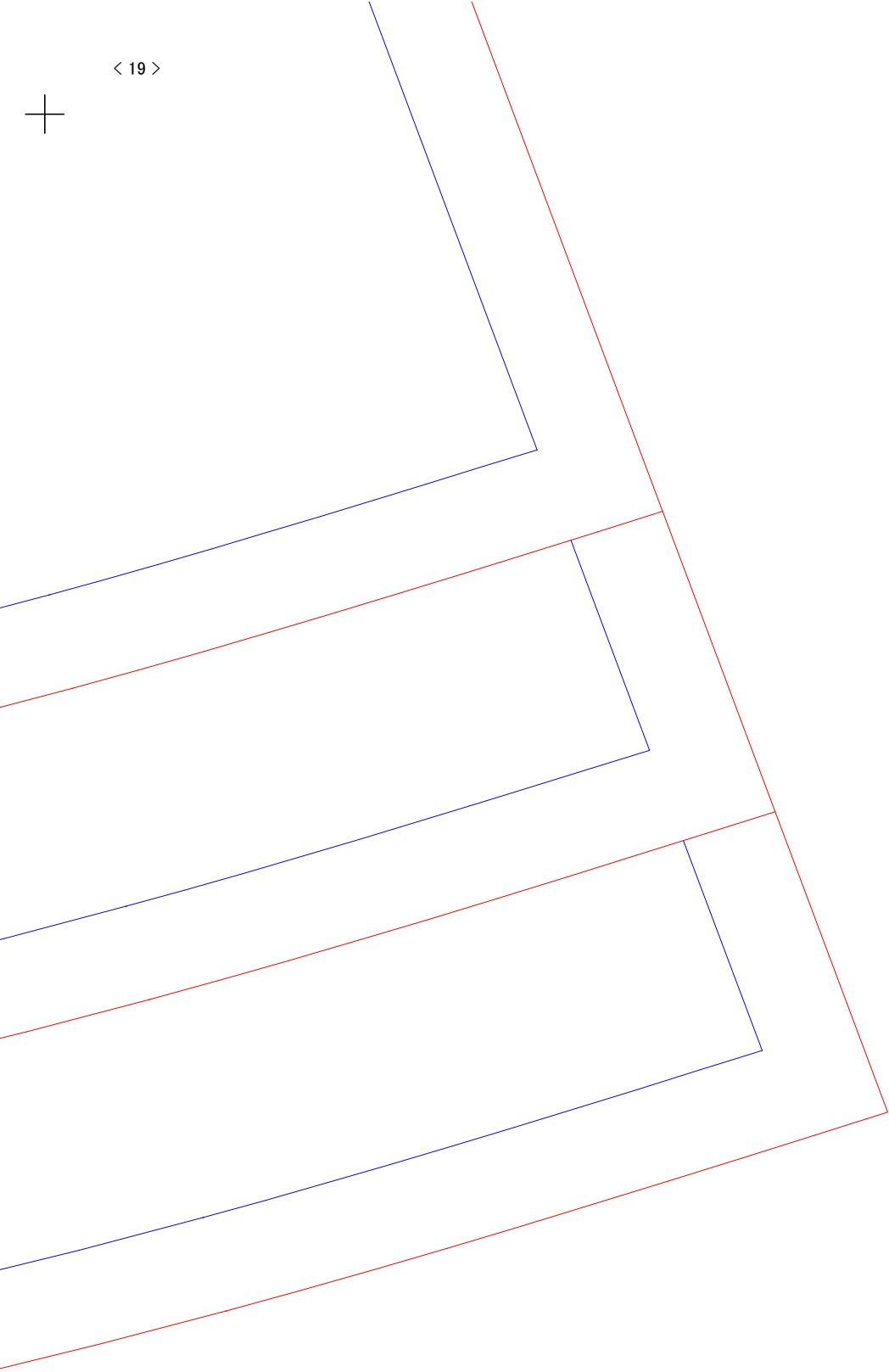
up the material as a mark.

re the corner,
wing a point the material as a mark.



+

+



B

テ一テ

婦人

前身頃

左右対

Long coat

M size

Front

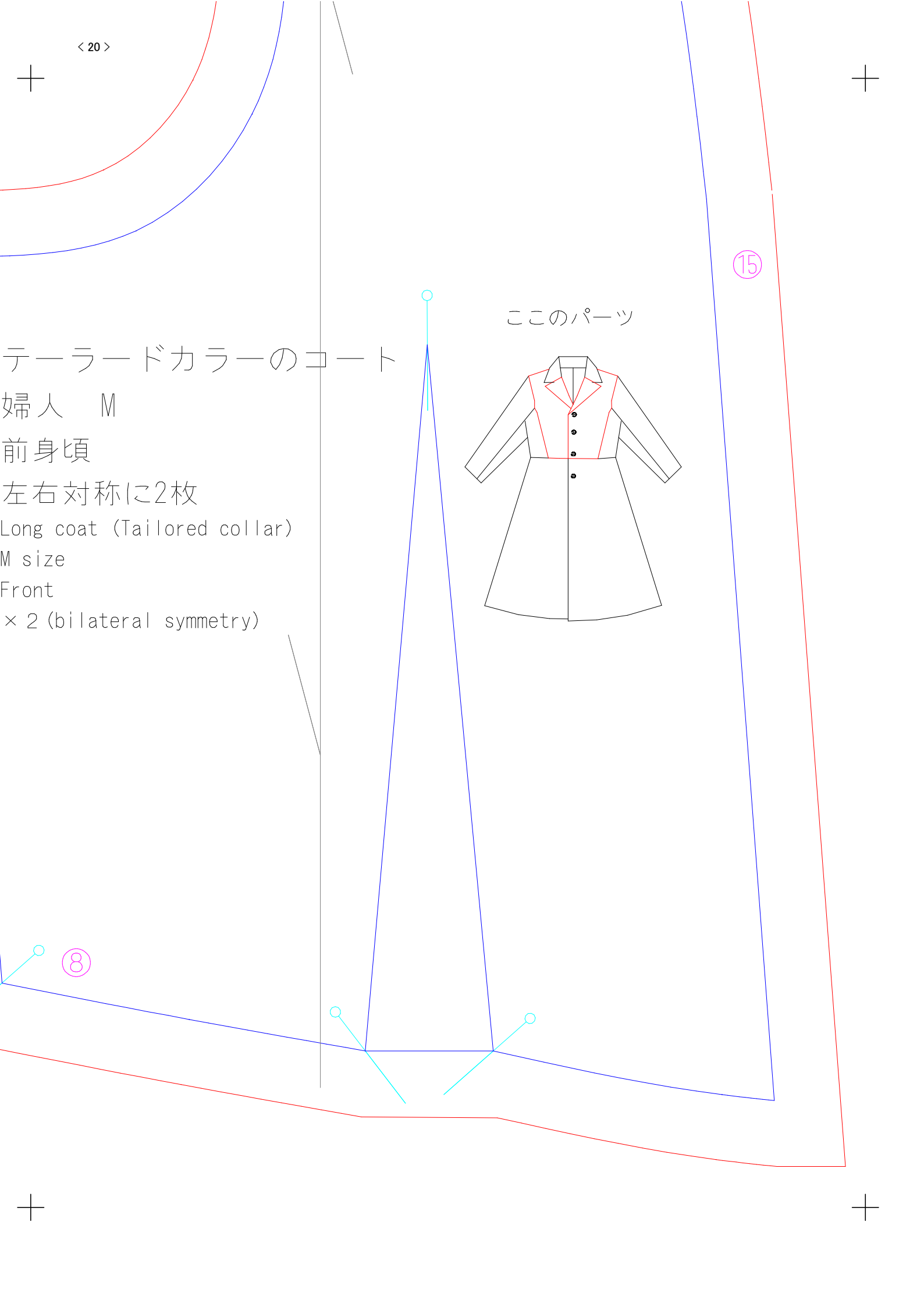
× 2 (bil

④

⑧



< 20 >



テーラードカラーのコート

婦人 M

前身頃

左右対称に2枚

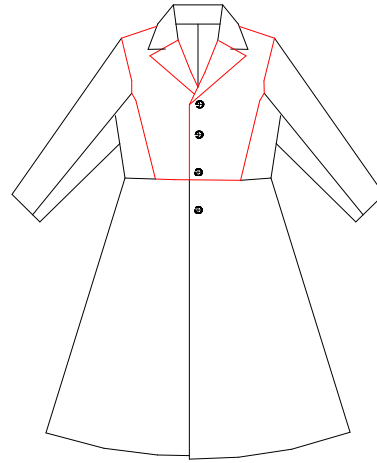
Long coat (Tailored collar)

M size

Front

× 2 (bilateral symmetry)

このパーツ



⑧

⑮